

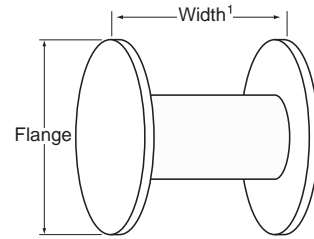
## PART NUMBERS

	BRAID COVERAGE	
CONSTRUCTION	STANDARD	QUADSHIELD
Nominal Braid Coverage %	60	60-40
<b>PVC Jacket (Regular)</b>		
Single	02850 TX15A60-VB	02852 TX15AQ-VB
Single (Colors)	—	—
Single Messengered	02853 TX15A60-VB-109M	02854 TX15AQ-VB-109M
<b>Polyethylene Jacket (Underground Floodant)</b>		
Single Flooded	02851 TX15A60-FEB	02858 TX15AQ-FEB
Single Flooded (Colors)	—	02859 TX15AQ-FEC
<b>PVC Jacket (lifeTime™ Floodant)</b>		
Single Flooded	32850 TX15A60-LTVB	32852 TX15AQ-LTVB
Single Flooded Messengered	—	32854 TX15AQ-LTVB-109M
<b>PVC Jacket, Flame Retardant – NEC Article 820 – “CATV (UL)”</b>		
Single	02850V TX15A60-VBV	02852V TX15AQ-VBV
Single (Colors)	—	—
<b>PVC Jacket, Flame Retardant – NEC Article 820 – “CATVR (UL)”</b>		
Single	02850R TX15A60-VBR	02852R TX15AQ-VBR
Single (Colors)	—	—



## REEL SIZE

CONSTRUCTION TYPE	REEL SIZE (Flange x Width)	
	inches	centimeters
Series 15		
All Types	30x15	76x39



<sup>1</sup> Width = outside flange to outside flange

## MAXIMUM ATTENUATION @ 68°F (20°C)

Frequency MHz	dB per 100 feet	dB per 100 meters
5	0.21	0.69
55	0.60	1.97
211	1.16	3.81
250	1.26	4.13
270	1.31	4.30
300	1.39	4.56
330	1.45	4.76
350	1.50	4.92
400	1.61	5.28
450	1.71	5.61
500	1.80	5.91
550	1.90	6.23
600	1.98	6.50
750	2.23	7.32
870	2.41	7.91
1000	2.59	8.50

Attenuation increases with increasing temperature and decreases with decreasing temperature at the rate of 0.1% /°F (0.18% /°C)

## PHYSICAL SPECIFICATIONS

NOMINAL DIMENSIONS	STANDARD		QUADSHIELD	
	60		60-40	
Braid Coverage %	inches	(mm)	inches	(mm)
Conductor	0.1090	(2.77)	0.1090	(2.77)
Dielectric	0.455	(11.6)	0.455	(11.6)
Sealed APA Tape (1st Outer Conductor)	0.463	(11.6)	0.463	(11.8)
Aluminum Braid (2nd Outer Conductor)	0.490	(12.4)	0.490	(12.4)
Unsealed APA Tape (3rd Outer Conductor)	—	—	0.494	(12.5)
Aluminum Braid (4th Outer Conductor)	—	—	0.523	(13.3)
Jacket	0.590	(15.0)	0.623	(15.8)
<b>Cable Width (Single)</b>				
Messenger Diameter (Single)	0.109	(2.77)	0.109	(2.77)
Single Messengered Width	0.814	(20.7)	0.847	(21.5)
<b>Messenger Break Strength</b>	<b>Size</b>	<b>Min</b>	<b>Max</b>	
	0.109 in (2.77mm)	1800 lb (8007 N)	2190 lb (9742 N)	
<b>Cable Weight [lb./kft. (kg/km)]</b>				
<b>Regular</b>	60		60-40	
<b>Single</b>	101	(150)	115	(171)
Single Messengered	143	(213)	—	—
<b>Underground</b>				
Single Flooded (PVC)	—	—	—	—
Single Flooded (PE)	81	(121)	93	(138)
<b>lifeTime™</b>				
Single Flooded	99	(147)	112	(167)
Single Flooded Messengered	—	—	153	(228)

## ELECTRICAL SPECIFICATIONS

Nominal DC Resistance @ 68°F (20°C)	Ohms per kft. (Ohms/ km)			
Braid Coverage %	Standard		Quadshield	
Conductors	60		60-40	
Center Conductor	1.35	(4.43)	1.35	(4.43)
Outer Conductor	4.42	(14.50)	2.50	(8.20)
Loop	5.77	(18.93)	3.85	(12.63)
<b>Nominal Capacitance</b>	15.5 pF/ft (50.9 pF/m)			
<b>Impedance</b>	75 ± 2 Ohms			
<b>Velocity of Propagation</b>	88% nominal			