

PART NUMBERS

CONSTRUCTION	BRAID COVERAGE				
	STANDARD	PREMIUM	TRISHIELD	QUADSHIELD	QUADSHIELD
Nominal Braid Coverage %	53	60	60	53 - 32	60 - 40
PVC Jacket (Regular)					
Single	02362 T1153-VB	023T2 T1160-VB	02642 T11T60-VB	02262 T11Q53/32-VB	022T2 T11Q-VB
Single (Colors)	02390 T1153-VC	023U2 T1160-VC	02640 T11T60-VC	— —	— —
Single Messengered (Pole-to-House)	02369 T1153-VB-083M	023V2 T1160-VB-083M	02643 T11T60-VB-083M	02269 T11Q53/32-VB-083M	— —
Single Messengered (Pole-to-Pole)	— —	023VD T1160-VB-109M	— —	— —	022V7 T11Q-VB-109M
PVC Jacket (Underground Floodant)					
Single Flooded	02382 T1153-FVB	023W2 T1160-FVB	02644 T11T60-FVB	02282 T11Q53/32-FVB	— —
Single Flooded (colors)	02398 T1153-FVC	023W1 T1160-FVC	026W1 T11T60-FVC	02298 T11Q53/32-FVC	— —
Polyethylene Jacket					
Single Flooded	02381 T1153-FEB	023W4 T1160-FEB	026W4 T11T60-FEB	02281 T11Q53/32-FEB	022W4 T11Q-FEB
Single Flooded (Colors)	02135 T1153-FEC	023WA T1160-FEC	026WA T11T60-FEC	02297 T11Q53/32-FEC	022WA T11Q-FEC
Single Messengered (Pole-to-House)	02324 T1153-EB-083M	— —	— —	— —	— —
Single Messengered (Pole-to-Pole)	02366 T1153-EB-109M	023VE T1160-EB-109M	— —	02266 T11Q53/32-EB-109M	— —
PVC Jacket (lifeTime™ Floodant)					
Single Flooded	32362 T1153-LTVB	323T2 T1160-LTVB	32642 T11T60-LTVB	32262 T11Q53/32-LTVB	322T2 T11Q-LTVB
Single Flooded Messengered (Pole-to-House)	32369 T1153-LTVB-083M	323V2 T1160-LTVB-083M	32643 T11T60-LTVB-083M	32269 T11Q53/32-LTVB-083M	322T1 T11Q-LTVB-083M
Single Flooded Messengered (Pole-to-Pole)*	— —	— —	— —	— —	322V7 T11Q-LTVB-109M
PVC Jacket, Flame Retardant – NEC Article 820 – “CATV (UL)”***					
Single	02362V T1153-VBV	023T2V T1160-VBV	02642V T11T60-VBV	02262V T11Q53/32-VBV	— —
Single (Colors)	— —	— —	— —	02267V T11Q53/32-VCV	— —
PVC Jacket, Flame Retardant w/lifeTime™ – NEC Article 820 – “CATV (UL)”***					
Single	32362V T1153-LTVBV	— —	— —	32262V T11Q53/32-LTVBV	322T2V T11Q-LTVBV
Single (Colors)	— —	— —	— —	— —	— —
PVC Jacket, Flame Retardant – NEC Article 820 – “CATVR (UL)”***					
Single	— —	023T2R T1160-VBR	— —	— —	022T2R T11Q-VBR
PVC Jacket, Flame Retardant w/lifeTime™ – NEC Article 820 – “CATVR (UL)”***					
Single	— —	323T2R T1160-LTVBR	— —	— —	322T2R T11Q-LTVBR

*** CSA - CMH: Change “V” to “F”

UL CL2: Change “V” to “L”

CSA - CMG: Change “V” to “M”

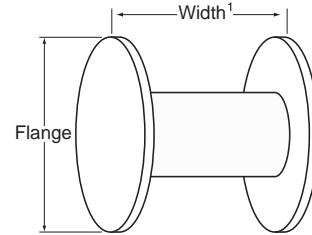
UL CM: Change “V” to “Y”



11 SERIES DROP CABLE T10

REEL SIZE

CONSTRUCTION TYPE	REEL SIZE	
	(Flange x Width)	
Series 11	inches	centimeters
Single	18x14	46x36
Single Trishield	18x14	46x36
Single Quadshield	18x14	46x36
Single Messengered	22x14	56x36
Single Messengered Trishield	22x14	56x36
Single Messengered Quadshield	22x14	56x36



¹Width = outside flange to outside flange

MAXIMUM ATTENUATION @ 68°F (20°C)

Frequency MHz	dB per 100 feet	dB per 100 meters
5	0.36	1.18
55	0.95	3.12
211	1.81	5.95
250	1.98	6.50
270	2.06	6.76
300	2.17	7.12
330	2.29	7.51
350	2.36	7.74
400	2.53	8.30
450	2.69	8.83
500	2.85	9.35
550	3.01	9.88
600	3.16	10.37
750	3.58	11.75
870	3.90	12.80
1000	4.23	13.88

Attenuation increases with increasing temperature and decreases with decreasing temperature at the rate of 0.1% / °F (0.18% / °C)

PHYSICAL SPECIFICATIONS

NOMINAL DIMENSIONS	STANDARD		PREMIUM		TRISHIELD		QUADSHIELD		QUADSHIELD	
Braid Coverage %	53		60		60		53 - 32		60 - 40	
	inches	(mm)	inches	(mm)	inches	(mm)	inches	(mm)	inches	(mm)
Conductor	0.0641	(1.63)	0.0641	(1.63)	0.0641	(1.63)	0.0641	(1.63)	0.0641	(1.63)
Dielectric	0.280	(7.11)	0.280	(7.11)	0.280	(7.11)	0.280	(7.11)	0.280	(7.11)
Sealed APA Tape (1st Outer Conductor)	0.288	(7.32)	0.288	(7.32)	0.288	(7.32)	0.288	(7.32)	0.288	(7.32)
Aluminum Braid (2nd Outer Conductor)	0.312	(7.92)	0.312	(7.92)	0.312	(7.92)	0.312	(7.92)	0.312	(7.92)
Unsealed APA Tape (3rd Outer Conductor)	—	—	—	—	0.316	(8.03)	0.316	(8.03)	0.316	(8.03)
Aluminum Braid (4th Outer Conductor)	—	—	—	—	—	—	0.341	(8.66)	0.341	(8.66)
Jacket	0.400	(10.2)	0.400	(10.2)	0.400	(10.2)	0.407	(10.3)	0.407	(10.3)
Cable Width										
Messenger Diameter (Pole-to-House)	0.083	(2.11)	0.083	(2.11)	0.083	(2.11)	0.083	(2.11)	0.083	(2.11)
Messenger Diameter (Pole-to-Pole)	0.109	(2.77)	0.109	(2.77)	0.109	(2.77)	0.109	(2.77)	0.109	(2.77)
Single Messengered (Pole-to-House)	0.608	(15.4)	0.608	(15.4)	0.608	(15.4)	0.615	(15.6)	0.615	(15.6)
Single Messengered (Pole-to-Pole)*	0.624	(15.9)	0.624	(15.9)	0.624	(15.9)	0.631	(16.0)	0.631	(16.0)
Messenger Break Strength										
	Size		Minimum		Maximum					
	0.083 in (2.11 mm)		460 lb (2046 N)		622 lb (2767 N)					
	0.109 in (2.77 mm)		1800 lb (8007 N)		2190 lb (9742 N)					
Cable Weight [lb./kft. (kg/km)]										
PVC Jacket Regular										
Single	58	(86)	58	(86)	56	(83)	58	(86)	58	(86)
Single Messengered (Pole-to-House)	86	(128)	86	(128)	84	(125)	83	(124)	—	—
Single Messengered (Pole-to-Pole)	—	—	100	(149)	—	—	—	—	—	—
Polyethylene Jacket Regular										
Single	—	—	48	(71)	—	—	—	—	—	—
Single Messengered (Pole-to-House)	72	(107)	—	—	—	—	—	—	—	—
Single Messengered (Pole-to-Pole)	86	(128)	86	(128)	—	—	87	(129)	100	(149)
Underground										
Single Flooded (PVC)	57	(85)	57	(85)	58	(86)	56	(83)	—	—
Single Flooded (PE)	47	(70)	48	(71)	49	(73)	48	(71)	49	(73)
lifeTime™										
Single Flooded	57	(85)	57	(85)	58	(86)	56	(83)	57	(85)
Single Flooded Messengered (Pole-to-House)	82	(122)	83	(124)	83	(124)	81	(121)	82	(122)
Single Flooded Messengered (Pole-to-Pole)	—	—	—	—	—	—	98	(146)	—	—

ELECTRICAL SPECIFICATIONS

Nominal DC Resistance @ 68°F (20°C)	Ohms/kft. (Ohms/km)									
Braid Coverage %	Standard		Premium		Trishield		Quadshield		Quadshield	
Conductors	53		60		60		53 - 32		60 - 40	
Center Conductor	12.1	(40)	12.1	(40)	12.1	(40)	12.1	(40)	12.1	(40)
Outer Conductor	7.22	(24)	6.48	(21)	4.55	(15)	3.99	(13)	3.55	(12)
Loop	19.3	(64)	18.6	(61)	16.7	(55)	16.1	(53)	15.7	(52)
Nominal Capacitance-all types					16.2 pF/ft (53.2 pF/m)					
Impedance					75 ± 3 Ohms					
Velocity of Propagation					85% nominal					