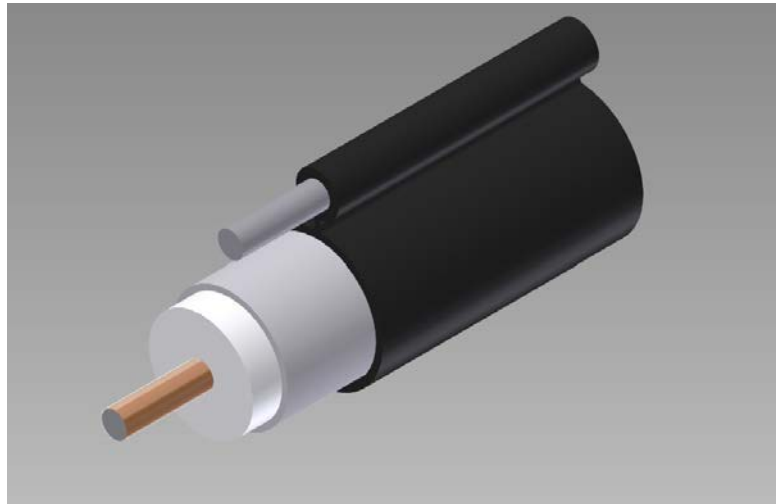




# TFC Coaxial Cable Product Information Sheet

## Type: T10625MS / 188 MESS

625 Series Coaxial Cable  
 Copper Clad Aluminum Conductor  
 Foamed Polyethylene Dielectric  
 Seamless Aluminum Tube Outer Conductor  
 Medium Density Polyethylene Jacket  
 0.188" Galvanized Steel Messenger,  
 Stranded



### Cable Ordering Information

Part Number	Description	NEC / CSA Listing
750625MS00BK110000001	T10625MS / 188 MESS	n/a

### Characteristics

Material	Detail	inches	mm
Inner Conductor	Copper Clad Aluminum	0.136	3.45
Dielectric	Foamed Polyethylene	0.563	14.3
Outer Conductor	Seamless Aluminum Tube	0.625	15.9
Floodant	---	---	---
Jacket	Polyethylene, Outdoor, Black	0.685	17.4
Messenger	Galvanized Steel, Stranded	0.188	4.78
Cable Width	---	1.100	27.9

### Mechanical Specifications

Minimum Bend Radius, in. (mm)		5.0	( 127)
Product Weight, lbs/kft (kg/km)	(less reel)	238	( 354)

Customers are reminded that they are SOLELY responsible for confirming that all products are properly installed and used in accordance with all applicable codes and regulations.

Document: t10625ms-188mess\_1ghz14.doc  
 Revision: 10.6.2014  
 Page: 1 of 2

Times Fiber Communications, Inc.  
 358 Hall Avenue  
 Wallingford, CT 06492  
 Toll Free +1-800-677-2288  
 Toll +1-434-432-1800  
 Fax +1-434-432-1821  
[www.timesfiber.com](http://www.timesfiber.com)

**uncontrolled copy**

All Rights Reserved,  
 Specifications subject to change without notice



# TFC Coaxial Cable Product Information Sheet

## Type: T10625MS / 188 MESS

Electrical Specifications		
Impedance, $\Omega$	75 $\pm$ 2	
Velocity of Propagation, %	87	
Capacitance, Nominal	15.6 pF/ft	51.2 pF/m
DC Resistance	$\Omega$ / kft	$\Omega$ / km
Inner Conductor	0.86	2.82
Outer Conductor	0.23	0.75
Loop	1.09	3.57

Notes:

---



---



---



---



---



---



---



---



---



---



---



---



---



---



---



---



---



---



---



---



---



---

Attenuation, Maximum @ 68 °F (20 °C)		
Frequency, MHz	dB / 100 ft	dB / 100 m
5	0.13	0.43
55	0.45	1.48
211	0.89	2.92
250	0.98	3.22
270	1.02	3.35
300	1.08	3.54
330	1.14	3.74
350	1.18	3.87
400	1.27	4.17
450	1.35	4.69
500	1.43	4.95
550	1.51	4.95
600	1.58	5.18
750	1.79	5.87
870	1.95	6.40
1000	2.11	6.92

Customers are reminded that they are SOLELY responsible for confirming that all products are properly installed and used in accordance with all applicable codes and regulations.

Document: t10625ms-188mess\_1ghz14.doc  
 Revision: 10.6.2014  
 Page: 2 of 2

Times Fiber Communications, Inc.  
 358 Hall Avenue  
 Wallingford, CT 06492  
 Toll Free +1-800-677-2288  
 Toll +1-434-432-1800  
 Fax +1-434-432-1821  
[www.timesfiber.com](http://www.timesfiber.com)

**uncontrolled copy**  
 All Rights Reserved,  
 Specifications subject to change without notice