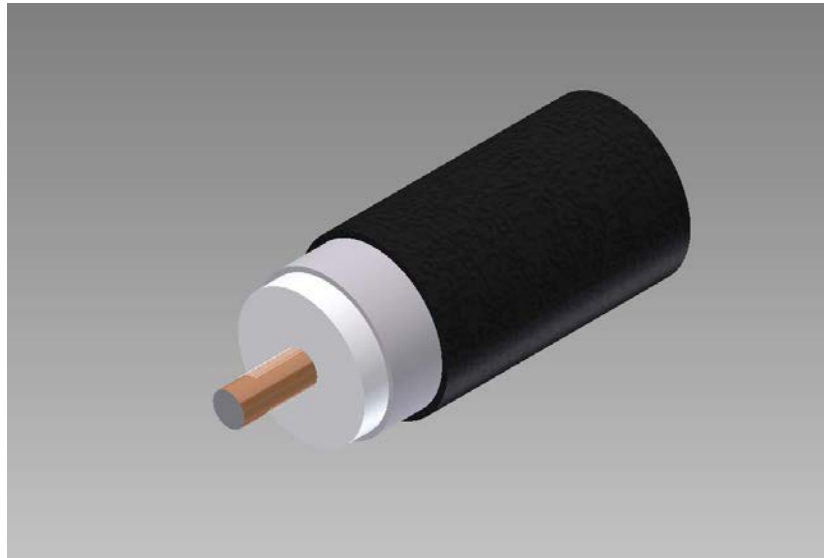




TFC Coaxial Cable Product Information Sheet

Type: T10625JBF

625 Series Coaxial Cable
 Copper Clad Aluminum Conductor
 Foamed Polyethylene Dielectric
 Seamless Aluminum Tube Outer
 Conductor
 Aerial Asphaltic Floodant
 Medium Density Polyethylene Jacket



Cable Ordering Information

Part Number	Description	NEC / CSA Listing
750625JBF0BK00100001	T10625JBF	none

Characteristics

Material	Detail	inches	mm
Inner Conductor	Copper Clad Aluminum	0.136	3.45
Dielectric	Foamed Polyethylene	0.563	14.3
Outer Conductor	Seamless Aluminum Tube	0.625	15.9
Floodant	Aerial Asphaltic	---	---
Jacket	Polyethylene, Outdoor Black	0.695	17.7
Messenger	---	---	---
Cable Width	---	---	---

Mechanical Specifications

Minimum Bend Radius, in. (mm)		5.0	(127)
Product Weight, lbs/kft (kg/km)	(less reel)	151	(225)

Customers are reminded that they are SOLELY responsible for confirming that all products are properly installed and used in accordance with all applicable codes and regulations.

Document: t10625jbf_1ghz14.doc
 Revision: 10.6.2014
 Page: 1 of 2

Times Fiber Communications, Inc.
 358 Hall Avenue
 Wallingford, CT 06492
 Toll Free +1-800-677-2288
 Toll +1-434-432-1800
 Fax +1-434-432-1821
www.timesfiber.com

uncontrolled copy
 All Rights Reserved,
 Specifications subject to change without notice

